

ADFORS Novelio® paintable glassfibre wallcoverings

Product description

ADFORS Novelio® paintable wallcoverings:

- made from glassfibre
- woven or nonwoven
- in roll format
 - typical size 1 × 50 m
 - protected in plastic foil
 - packed in collective boxes on standard 120 × 80 cm pallets which are typically stackable

Product is designed to be painted with standard water based interior paints. All ADFORS Novelio® products are made in comply with EN15102, thus having CE mark.



ADFORS Novelio® paintable glassfibre wallcoverings

Typical use

Thanks to enormous number of weights, patterns and paints, ADFORS Novelio® offers an infinite variety of finished surfaces. Glassfibre origin brings long-term and durable protection of walls and excellent reaction to fire class without any additives, which make the product ideal for public areas as well as for the residential use.



ADFORS Novelio® paintable glassfibre wallcoverings

Product naming

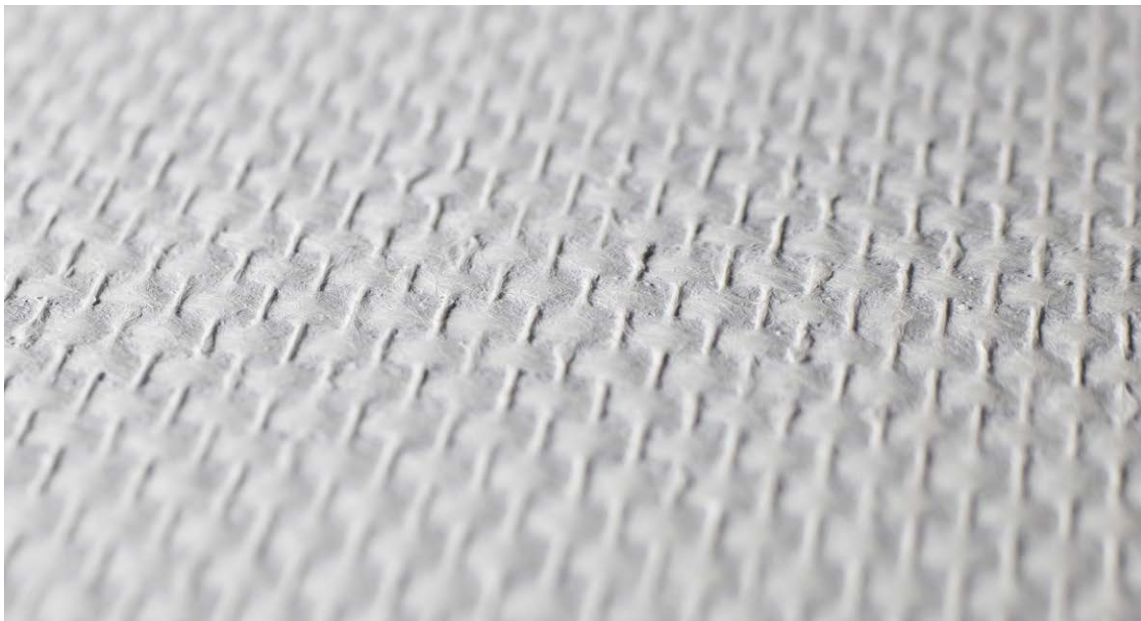
Examples: T1003, N0128, GV45

Prefix: T/N – woven wallcovering
F – FireResist
GV – nonwoven wallcovering (glass vlies)
CV – cellulosic nonwoven wallcovering

Number: In case of **T** and **N** it represents number of pattern
In case of **GV** (glass vlies, with flat structure, no pattern) it represents final weight of product

Suffix: C – EasyPaint (pre-painted)
E – EasyGlue (pre-glued)
X – EasyFix (self-adhesive)
F – CleanAir
M – Mold-X
S – Design (two-tones, sand-coated)
R – Renovation
Y – Acoustic

Examples: T1013, N0128 – Classic Standard
T1013C – Classic EasyPaint (pre-painted)
T1013CE – Classic EasyGlue & EasyPaint (pre-glued, pre-painted)



ADFORS Novelio® paintable glassfibre wallcoverings

Product ranges

ADFORS Novelio® comes in various ranges. Every range has its specific like time saving, effective installation for professionals, sanitary aspect to improve the indoor environment for the occupants or specific, unique designs to meet the highest visual expectations.

ADFORS Novelio® paintable glassfibre wallcoverings:

Classic

Traditional paintable wallcoverings.

Standard

Standard products, which should be painted twice (e.g.: T1003, N0128).

EasyPaint

Pre-painted products, which need just one layer of paint in case of light color finish (e.g.: T1112C).

EasyGlue

Pre-glued (and often pre-painted at the same time) products with water activated glue on the back side (e.g.: T1013CE).

Specialties

Specific paintable wallcoverings with additional features.

EasyFix

Self-adhesive products, which should be painted twice to achieve the final adhesion (e.g.: T1038X).

Mold-X

Sanitary products, which block development of molds and bacteria on their surfaces (e.g.: N0101M).

CleanAir

Sanitary products, which actively trap free formaldehyde from the air (e.g.: N0130F).

Renovation

Products for quick and easy renovation of old, cracked walls or old wallcoverings on them (e.g.: GV250CR).

Renovation Acoustic

Products for improvement of acoustic comfort in the room and for the heavy renovation jobs (e.g.: T1013CY).

Magnet

Magnetic products (e.g.: T1006CMG).

FireResist

System of pre-painted products and special glue with A2 reaction to fire class (e.g.: F1010C).

ADFORS Novelio® paintable glassfibre wallcoverings

Technical data

Width = 100 cm (can vary a little in order to respect the pattern - e.g.: Fishbone)

Length = 25 or 50 m (shorter lengths are available or can be made on demand)

ADFORS Novelio® Classic Standard

| TYPE | PATTERN | WEIGHT [g/m ²] ±8% |
|-------|----------------|-----------------------------------|
| 60128 | Weaving | 110 |
| 60132 | Small Weaving | 110 |
| 60135 | Weaving | 120 |
| 60420 | Zig Zag | 170 |
| 60440 | Diagonal | 170 |
| 76128 | Weaving | 95 |
| 76228 | Weaving | 95 |
| 90101 | Ceiling | 145 |
| 90135 | Weaving | 135 |
| 99128 | Weaving | 110 |
| 99130 | Weaving | 115 |
| CV100 | Flat | 100 |
| CV120 | Flat | 120 |
| CV130 | Flat | 130 |
| CV149 | Flat | 150 |
| CV150 | Flat | 150 |
| CV50 | Flat | 50 |
| GV35 | DecoVeil | 35 |
| GV45 | DecoVeil | 45 |
| N0060 | Small Fishbone | 180 |
| N0081 | Ceiling | 105 |
| N0100 | Ceiling | 115 |
| N0101 | Ceiling | 130 |
| N0105 | Ceiling | 135 |
| N0120 | Diagonal | 175 |
| N0125 | Strip | 160 |
| N0128 | Weaving | 120 |
| N0130 | Weaving | 120 |
| N0133 | Small Weaving | 155 |
| N0135 | Weaving | 120 |
| N0136 | Small Caro | 175 |
| N0139 | Large Caro | 210 |
| N0140 | Weaving | 145 |

| TYPE | PATTERN | WEIGHT [g/m ²] ±8% |
|-------|---------------|-----------------------------------|
| N0145 | Weaving | 195 |
| N0160 | Fishbone | 130 |
| N0165 | Fishbone | 175 |
| N0180 | Braid | 195 |
| N0181 | Braid | 170 |
| N0195 | Weaving | 220 |
| N0260 | Fishbone | 150 |
| N0440 | Diagonal | 170 |
| N0485 | Interlacing | 180 |
| N0490 | Mosaic | 190 |
| N0530 | Diamantine | 220 |
| N0700 | Gresine | 225 |
| N0710 | Crepine | 220 |
| N0730 | Losine | 210 |
| N4860 | Palm | 250 |
| N4875 | Undulation | 230 |
| N9101 | Ceiling | 135 |
| N9130 | Weaving | 130 |
| N9135 | Weaving | 135 |
| T1000 | Weaving | 168 |
| T1003 | Ceiling | 136 |
| T1004 | Weaving | 220 |
| T1005 | Strip | 174 |
| T1006 | Ceiling | 152 |
| T1009 | Braid | 195 |
| T1010 | Weaving | 147 |
| T1011 | Braid | 159 |
| T1012 | Weaving | 120 |
| T1013 | Weaving | 158 |
| T1015 | Braid | 160 |
| T1017 | Weaving | 210 |
| T1023 | Mosaic | 195 |
| T1024 | Small Weaving | 147 |

| TYPE | PATTERN | WEIGHT [g/m ²] ±8% |
|-------|----------------|-----------------------------------|
| T1036 | Lozenge Strip | 205 |
| T1038 | Weaving | 115 |
| T1039 | Weaving | 110 |
| T1050 | Metis | 126 |
| T1051 | Metis | 200 |
| T1109 | Braid | 230 |
| T1112 | Weaving | 126 |
| T1137 | Diagonal Strip | 179 |
| T1138 | Weaving | 112 |
| T1500 | Weaving | 82 |
| T1501 | Weaving | 85 |
| T1510 | Weaving | 96 |
| T1511 | Weaving | 120 |
| T2001 | Small Fishbone | 170 |
| T2002 | Domino | 196 |
| T2004 | Fishbone | 192 |
| T2005 | Diagonal | 184 |
| T2006 | Fishbone | 185 |
| T2007 | Lozenge | 190 |
| T2008 | Diagonal | 191 |
| T2009 | Diagonal | 163 |
| T2011 | Smal Lozenge | 193 |
| T2012 | Small Fishbone | 220 |
| T2014 | Domino | 195 |
| T2018 | Fishbone | 145 |
| T2024 | Chess | 166 |
| T2101 | Small Fishbone | 180 |
| T2105 | Diagonal | 184 |
| T3001 | Crepi | 200 |
| T3011 | Crepi | 155 |

ADFORS Novelio® paintable glassfibre wallcoverings

ADFORS Novelio® Classic EasyPaint

| TYPE | PATTERN | WEIGHT [g/m ²] ±8% |
|--------|-----------------|-----------------------------------|
| CV180C | Flat | 180 |
| CV200C | Flat | 200 |
| GV130C | DecoVeil | 130 |
| GV190C | DecoVeil | 190 |
| GV200C | DecoVeil | 200 |
| GV70C | DecoVeil | 85 |
| GV75C | DecoVeil | 100 |
| N0260C | Fishbone | 150 |
| T1000C | Weaving | 168 |
| T1003C | Ceiling | 136 |
| T1006C | Ceiling | 152 |
| T1007C | Weaving | 139 |
| T1009C | Braid | 195 |
| T1010C | Weaving | 147 |
| T1011C | Braid | 159 |
| T1012C | Weaving | 120 |
| T1013C | Weaving | 158 |
| T1017C | Weaving | 210 |
| T1037C | Broken Diagonal | 179 |
| T1050C | Metis | 126 |
| T1051C | Metis | 200 |
| T1104C | Weaving | 201 |
| T1109C | Braid | 230 |
| T1112C | Weaving | 126 |
| T1117C | Weaving | 183 |
| T1137C | Broken Diagonal | 179 |
| T1510C | Weaving | 96 |
| T1511C | Weaving | 120 |
| T2001C | Small Fishbone | 170 |
| T2002C | Domino | 196 |
| T2004C | Fishbone | 192 |
| T2007C | Lozenge | 191 |
| T2014C | Domino | 195 |
| T2018C | Fishbone | 145 |
| T2105C | Diagonal | 184 |

| TYPE | PATTERN | WEIGHT [g/m ²] ±8% |
|--------|---------|-----------------------------------|
| T3001C | Crepi | 200 |
| T3011C | Crepi | 155 |
| T3012C | Crepi | 227 |
| T3111C | Crepi | 225 |
| T3211C | Crepi | 187 |

ADFORS Novelio® Classic EasyGlue

| TYPE | PATTERN | WEIGHT [g/m ²] ±8% |
|---------|----------------|-----------------------------------|
| GV130CE | DecoVeil | 152 |
| GV190CE | DecoVeil | 216 |
| T1000CE | Weaving | 211 |
| T1003CE | Ceiling | 166 |
| T1004CE | Weaving | 265 |
| T1006CE | Ceiling | 176 |
| T1007CE | Weaving | 180 |
| T1009CE | Braid | 255 |
| T1010CE | Weaving | 196 |
| T1010E | Weaving | 196 |
| T1013CE | Weaving | 202 |
| T1051E | Metis | 220 |
| T1104CE | Weaving | 244 |
| T1109CE | Braid | 287 |
| T1112CE | Weaving | 166 |
| T2004CE | Fishbone | 253 |
| T2101CE | Small Fishbone | 215 |
| T3001CE | Crepi | 250 |
| T3011CE | Crepi | 188 |
| T3012CE | Crepi | 284 |
| T3111CE | Crepi | 250 |
| T3211CE | Crepi | 245 |

ADFORS Novelio® paintable glassfibre wallcoverings

ADFORS Novelio® Easy Fix

| TYPE | PATTERN | WEIGHT [g/m ²] ±8% |
|--------|---------|-----------------------------------|
| T1038X | EasyFix | 125 |

ADFORS Novelio® CleanAir

| TYPE | PATTERN | WEIGHT [g/m ²] ±8% |
|---------|----------|-----------------------------------|
| GV130CF | DecoVeil | 130 |
| GV190CF | DecoVeil | 190 |
| N0101F | Ceiling | 135 |
| N0130F | Weaving | 120 |
| N0181F | Braid | 175 |
| N0710F | Crepi | 210 |
| T1013CF | Weaving | 160 |

ADFORS Novelio® Mold-X

| TYPE | PATTERN | WEIGHT [g/m ²] ±8% |
|---------|----------|-----------------------------------|
| GV130CM | DecoVeil | 130 |
| GV190CM | DecoVeil | 190 |
| N0101M | Ceiling | 130 |
| N0130M | Weaving | 120 |
| N0181M | Braid | 170 |
| N0710M | Crepi | 210 |
| T1013CM | Weaving | 160 |

ADFORS Novelio® Renovation

| TYPE | PATTERN | WEIGHT [g/m ²] ±8% |
|---------|----------|-----------------------------------|
| GV95CR | Foamy | 95 |
| GV250CR | DecoVeil | 250 |
| N0892 | Taloche | 210 |
| T2004CR | Fishbone | 415 |
| GV190CR | DecoVeil | 410 |
| T1013CR | Weaving | 380 |
| T3111CR | Crepi | 380 |

ADFORS Novelio® Renovation Acoustic

| TYPE | PATTERN | WEIGHT [g/m ²] ±8% |
|---------|----------|-----------------------------------|
| GV190CY | DecoVeil | 500 |
| T1009CY | Braid | 470 |
| T1013CY | Weaving | 510 |
| T3011CY | Crepi | 530 |

ADFORS Novelio® FireResist

| TYPE | PATTERN | WEIGHT [g/m ²] ±8% |
|--------|---------|-----------------------------------|
| F1010C | Weaving | 147 |
| F1050C | Metis | 126 |
| F3011C | Crepi | 160 |
| F0892C | Taloche | 220 |

ADFORS Novelio® Magnet

| TYPE | PATTERN | WEIGHT [g/m ²] ±8% |
|----------|----------|-----------------------------------|
| GV200CMG | DecoVeil | 1 100 |
| T1006CMG | Ceiling | 1 050 |
| MWB | Flat | 1 200 |

ADFORS Novelio® paintable glassfibre wallcoverings

Installation

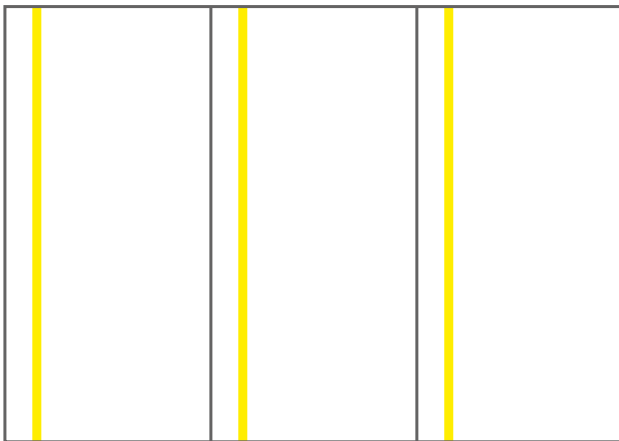
Substrate must be clean, dry, even (flat), stable and smooth. All holes or cracks must be filled. In case of stucco, small grains have to be removed from the surface before the installation. We recommend to prime the wall before the application in order to clean surface, unify the glue absorption and make the potential removal easier.

Do not apply product when the temperature is below 8 °C.

Apply the glue suitable for glassfibre wallcovering evenly on the wall by means of roller. Glue layer should be homogeneous and in quantity about 250 g/m². If the glue is applied with a spray device, it should always be evened out using a roller.

Place wallcovering panel immediately on the layer of fresh glue and press it over the whole surface by means of plastic spatula or rubber roller to remove any air bubbles. Push it carefully into the corners and cut of the excess by means of plastic or steel spatula with round edges.

Respect and keep the same orientation of individual panels. For that reason, products are marked on the back side with continuous yellow strip or batch number, which is close to one edge.



Product edges are precisely cut in order to use butt joint (edge to edge). Overlap is not recommended for woven styles, but can be used for nonwoven products (veils). When matching adjacent panels together, respect the pattern weaving in order to make joint “invisible”.



ADFORS Novelio® paintable glassfibre wallcoverings

In case of excess of glue coming out of joint, clean it immediately with wet sponge or towel. Let product enough time to dry – typically one day in standard conditions.

Painting must be realized once the product is completely dry. Standard interior water based paints are recommended. The second coat has to be applied again only after the complete drying – typically again after one day. EasyPaint (pre-painted, -C) styles require typically just one layer of paint (in case of light color finish).

For FireResist range, high-quality acrylic paint of maximum 250 g/m² is recommended.

Warranty

Products are carefully checked before leaving our factory. Due to its textile nature, they must be checked also before the final installation. Any claim should be accompanied with the roll label and a sample featuring the defect.

30.7.2021 11:06:57
1112 1166 005 323082
9212111038 2111122367
3036020912



In general, installation must be revised, checked after the hanging of few panels and possibly stopped if there is any visible issue. Any complaints made after installation of more than 10 panels cannot be accepted.

Storage


Products must be stored in clean and dry place.

ADFORS Novelio® paintable glassfibre wallcoverings

Certification

CE mark

Products bear CE mark as they are in comply with EN 15102. Declaration of Performance is available on request.

| | |
|---|---|
|  | |
| 11 | |
| SAINT-GOBAIN ADFORS CZ s.r.o., Sokolovská 106, 570 01 Litomyšl, CZ | |
| Identification code: P – 2 – Glass Fibre Wall Covering | |
| Ref. nr. of DoP: DOP – 2 – Glass Fibre Wall Covering – 03 | |
| Glass Fibre Wall Covering | |
| Essential characteristics | Performance |
| Reaction to fire class: | B-s1 d0 (on plasterboard attached with starched-based glue) |
| Release of formaldehyde: | Passed |
| Release of other dangerous substances | |
| Antimony | < 4,00 ppm |
| Arsenic | Passed |
| Barium | Passed |
| Cadmium | Passed |
| Chromium | Passed |
| Copper | Passed |
| Lead | Passed |
| Mercury | Passed |
| Selenium | Passed |
| Vinyl chloride monomer | Passed |
| Sound absorption | NPD |
| Thermal resistance | NPD |
| Harmonised technical specification | EN15102:2007+A1:2011 |
| Notified body | 1020 |

SUIS

Full document is available on request. The products are not classified as hazardous according to European Regulation (EC) No 1272/2008 of the European Parliament and of the Council of 16 December 2008 on classification, labelling and packaging of substances and mixtures (CLP) and its subsequent amendments.

Reaction to fire

Products are naturally fire resistant as they are made from glass fibres. Reaction to fire classes:

Classic (all ranges), Renovation, EasyFix, Mold-X, CleanAir:

- EN 13501: B – s1, d0
- ASTM E84: Class A (FSI 20, SDI 5)
- CAN/ULC-S102: FSR 0, SDC 10

Magnet: EN 13501: C – s1, d0

Renovation Acoustic: EN 13501: C – s2, d0

FireResist: EN 13501: A2 – s1, d0

ADFORS Novelio® paintable glassfibre wallcoverings

OEKO-TEX

Products meet requirement of OEKO-TEX® standard 100. If a textile article carries the STANDARD 100 label, you can be certain that every component of this article, i.e. every thread has been tested for harmful substances and therefore the article is harmless for human health. The test is conducted by an independent OEKO-TEX® partner institutes on the basis of our extensive OEKO-TEX® criteria catalog. In the test they take into account numerous regulated and non-regulated substances, which may be harmful to human health. In many cases the limit values for the STANDARD 100 go beyond national and international requirements. The criteria catalog is updated at least once a year and expanded with new scientific knowledge or statutory requirements.

<https://www.oeko-tex.com/en/our-standards/standard-100-by-oeko-tex>

25.3.0033 – Glass fiber woven wallcoverings CZ

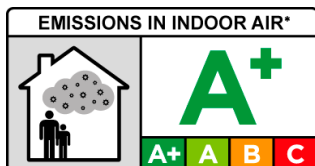
25.3.0073 – Glass fiber paintable wallcoverings AT

25.3.0147 – Glass fiber nonwoven, Novelio® Nature, FlashFibre, Decoration two-tones and Magnetic wallcoverings

French A+ VOC Label

Construction products, decoration and furnishing products to be traded in France are to be labelled with an emissions classification on the basis of VOC emissions tests. This is stated in the “Décret n° 2011-321” published on March 25th, 2011.

This mark has to be applied additionally to the CE mark (if required for the respective product). The basis of testing is ISO 16000.



Breathability

Products are breathable, allowing water vapors passing through them. This is extremely important for the durability of the wall and for the occupants as the blocked water is the main source of mold growth and development. Breathability was tested according to EN ISO 7783, s_d value \leq 0.12 m.