

Novelio® FlashFibre



CLEAN
AIR



READY-TO-USE



MADE OF NON-TOXIC
MATERIAL



IMPACT
RESISTANT



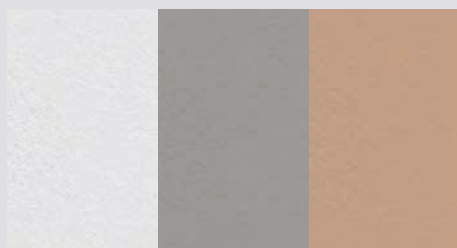
FIRE RESISTANT

Ready-to-use fibreglass wallcovering with a timeless and long-lasting design. It combines the classic look of fibreglass structures with the modern functionality and performance of the Nature collection with features including:

- PVC free
- CleanAir
- Breathability
- Washability and scrubbability
- Strippability
- Impact and fire resistant

The product is available at 3 basic patterns, representing proven classic and timeless designs:

- **Flat** – nonwoven, paper-like structure
- **Ceiling** – light woven structure
- **Weaving** – heavy woven structure



FLAT



CEILING



WEAVING

If the colour offer does not meet your needs, we can prepare a „tailor made“ colouring for you (minimum order quantity 5000 m²). To obtain the best results, you can then select the right sheen/surface finish:

- Matt
- Satin

Ready-to-use means a lot less worry and mess when applying.



Then you can choose from 3 basic colours:

- **White** – (RAL 9010)
- **Grey** – (Pantone 401U)
- **Beige** – (Pantone 727U)

As Novelio® FlashFibre is ready-to-use, there is no need to paint it (although this is possible if you so wish). It also brings huge time-savings during application making Novelio a very economical and quick solution – instead of 3 days, you can finish your room in just one day:

• **Example:**

Standard room with about 30 m ² of wall surface:			
	Day 1	Day 2	Day 3
	Application (glueing)	1 st layer of paint	2 nd layer of paint
Classic paintable wallcovering	X	X	X
Novelio® FlashFibre	X		

Standard roll size 1 x 50 m.

Follow us   

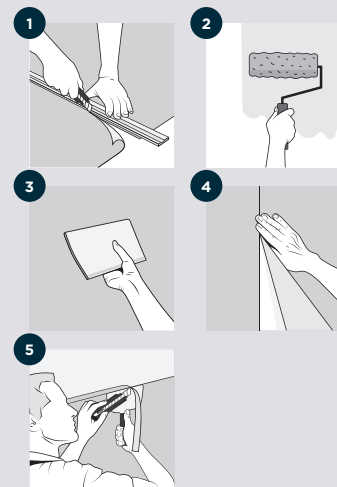
www.novelionature.com
www.adfors.com

Instructions

The wall must be clean (no dust, dirt or grease), dry, even and primed.
 Temperature should not be below 8 °C.

1. Cut to length according to room height (+10 cm).
2. Apply the good quality ready mixed adhesive evenly on the wall using a roller (-200 g/m²).
3. Place the wallcovering panel on the wall vertically and smooth it with a plastic spatula.
4. Place the adjacent panel edge to edge (respect vertical pattern repeat). Clean excess of glue at the joint with a clean tissue. Repeat steps 1, 2, and 3 with other panels until you have finished the room.
5. Cut off any surplus with a knife.

The glass fibre fabric is carefully checked before leaving our factory but should also be checked again just before hanging. Any claim should be accompanied with roll label and a sample featuring the defect.



SAINT-GOBAIN ADFORS CZ s.r.o.

Sokolovská 106
 570 01 Litomyšl • Czech Republic
 Tel.: +420 461 651 110
www.adfors.com